



# MHP RIESEN Ludwigsburg 71 : 75 EWE Baskets Oldenburg



Referee: MATIP Martin  
 Umpires: KRÜPER Moritz / LODER Benedikt  
 Commissioner: GINTSCHEL Winfried

Attendance: 4.000  
 Ludwigsburg, MHP Arena Ludwigsburg (4.129 Plätze), SA 28 JAN 2023, 20:30, Game-ID: 27612

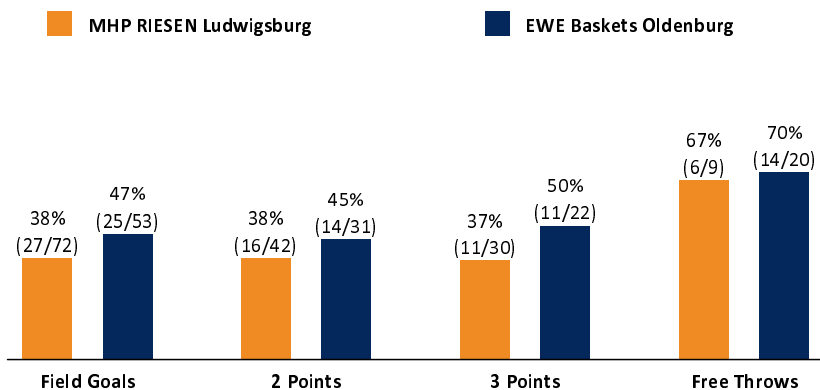
	Q1		Q2		Q3		Q4	
LUD	17	17	19	36	16	52	19	71
OLD	16	16	10	26	21	47	28	75

## LUD - MHP RIESEN Ludwigsburg (Coach: KING Josh)

No.	Name	Min	PTS	2 Points	3 Points	Field Goals	Free Throws	OR	DR	TR	AS	ST	TO	BS	SB	PF	FD	EFF	+/-	
*1	BÄHRE Jonathan	22:19	9	3/6 (50%)	1/2 (50%)	4/8 (50%)			2	2		1			1	1		8	2	
2	PATRICK Jacob	9:25	2				2/2 (100%)		1	1							1	3	-11	
*3	HUBB Prentiss	30:59	16	5/8 (63%)	2/10 (20%)	7/18 (39%)			2	2	4	1	3		1	3	2	9	-1	
6	PATRICK Johannes	DNP																		
*7	MILLER Shonn	20:40	4	1/3 (33%)	0/2 (0%)	1/5 (20%)	2/2 (100%)	3	4	7		3	1	1		4	3	10	3	
*12	DUNN Jhonathan	25:44	22	2/5 (40%)	6/8 (75%)	8/13 (62%)	0/2 (0%)		3	3			2	1		3	1	17	13	
*13	POLAS BARTOLO Yorman	31:41	2	1/6 (17%)	0/1 (0%)	1/7 (14%)		1	3	4	2		3	1		3	5	0	-10	
15	UGBO Emmanuel	DNP																		
17	SANTANA MOJICA Nico	DNP																		
23	JOHNSON Justin	19:12	4	2/7 (29%)	0/2 (0%)	2/9 (22%)	0/1 (0%)	2	1	3	3				1	3	3	2	-4	
27	EDIGIN Eddy	11:58	2	1/2 (50%)		1/2 (50%)		1	1	2	1	1		1		2		6	-2	
29	CHERRY Will	28:02	10	1/5 (20%)	2/5 (40%)	3/10 (30%)	2/2 (100%)		5	5	7	2	1		1	4	2	16	-10	
Team / Coach								4	2	6							6			
Totals			200:00	71	16/42 (38%)	11/30 (37%)	27/72 (38%)	6/9 (67%)	11	24	35	17	8	10	4	4	23	17	77	-4

## OLD - EWE Baskets Oldenburg (Coach: CALLES Pedro)

No.	Name	Min	PTS	2 Points	3 Points	Field Goals	Free Throws	OR	DR	TR	AS	ST	TO	BS	SB	PF	FD	EFF	+/-	
*4	RUSSELL DeWayne	36:41	10	4/10 (40%)	0/3 (0%)	4/13 (31%)	2/3 (67%)		2	2	9		7		1	2	7	4	4	
*5	DRECHSEL Trey	35:44	12	2/8 (25%)	2/7 (29%)	4/15 (27%)	2/2 (100%)	1	3	4	3		1		1	2	3	7	-7	
7	HEMSCHEMEIER Fritz	DNP																		
15	KLASSEN Owen	33:10	15	4/7 (57%)		4/7 (57%)	7/10 (70%)	3	11	14	5	2	2		2	2	7	28	-4	
*17	AGBAKOKO Norris	4:42	2	1/1 (100%)		1/1 (100%)	0/1 (0%)		3	3			2			2	1	2	0	
20	HARMS Joel	DNP																		
*21	LEISSNER Tanner	31:38	14	1/2 (50%)	3/5 (60%)	4/7 (57%)	3/4 (75%)		4	4			1	1		2	3	14	-10	
22	HOLYFIELD T.J.	10:30	2	1/1 (100%)		1/1 (100%)			1	1			1	1		3		3	22	
*31	TEAGUE MaCio	16:05	2	1/2 (50%)		1/2 (50%)			2	2	2	2	1	1		2	2	7	-5	
35	PJANIC Alen	31:30	18		6/7 (86%)	6/7 (86%)			4	4	3	1	1	1		2		25	20	
Team / Coach								2	3	5		1				4				
Totals			200:00	75	14/31 (45%)	11/22 (50%)	25/53 (47%)	14/20 (70%)	6	33	39	22	5	17	4	4	17	23	94	4



LUD	Rebounds OR/DR/TR	OLD
11 / 24 / 35		6 / 33 / 39
17	Assists	22
23	Fouls	17
17	Fouls Drawn	23
10	Turnovers	17
8	Steals	5
30	Points in the Paint	24
15	Second Chance Points	10
16	Fast Break Points	4
18 (36:18)	Biggest Lead	4 (71:75)
12-0 (26:16)	Biggest Scoring Run	13-0 (45:41)
	Lead Changes:	6
	Times Tied:	5



### EASYCREDIT-BBL.DE

Alle offiziellen Statistiken der easyCredit BBL, Daten, Rekorde uvm. gibt es auf easyCredit-BBL.de! Und für unterwegs: die neue offizielle Liga-App, kostenfrei für iOS und Android.



### MAGENTASPORT.DE

Keinen Korb mehr verpassen - Alle Spiele der easyCredit Basketball Bundesliga und des MagentaSport BBL Pokals live auf MagentaSport.de

**LEGEND**  
 Min Minutes Played    DR Defensive Rebounds    AS Assists    BS Blocked Shots    PF Fouls    +/- Plus-Minus-Rating  
 DNP Did Not Play    OR Offensive Rebounds    ST Steals    SB Shots Blocked    FD Fouls Drawn    \* Starters  
 PTS Points    TR Total Rebounds    TO Turnovers    EFF Efficiency = ((PTS + TR + AS + ST + BS) - ((FGA - FGM) + (FTA - FTM) + TO))