



MHP RIESEN Ludwigsburg 104 : 80 EWE Baskets Oldenburg



Referee: STRAUBE Carsten
 Umpires: STREIT Enrico / MOSKOVIC Alexander
 Commissioner: MOLITOR Horst

Attendance: 4.000
 Ludwigsburg, MHPArena Ludwigsburg (4.129 Plätze), MI 27 DEZ 2023, 20:00, Game-ID: 33297

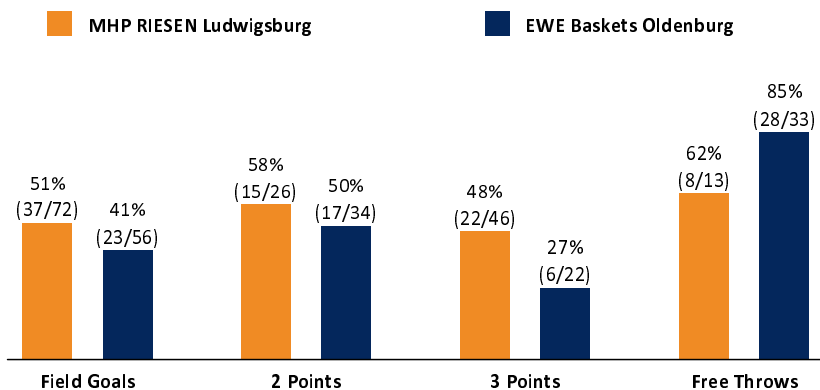
	Q1		Q2		Q3		Q4	
LUD	31	31	27	58	29	87	17	104
OLD	18	18	15	33	18	51	29	80

LUD - MHP RIESEN Ludwigsburg (Coach: KING Josh)

No.	Name	Min	PTS	2 Points	3 Points	Field Goals	Free Throws	OR	DR	TR	AS	ST	TO	BS	SB	PF	FD	EFF	+/-
0	HAMMOND Deion	9:46	13	2/2 (100%)	3/4 (75%)	5/6 (83%)			2	2	3					5		17	9
1	BÄHRE Jonathan	21:06	5	1/1 (100%)	1/1 (100%)	2/2 (100%)		1	4	5	2	1	1			1		12	21
2	PATRICK Jacob	11:59	8	1/2 (50%)	2/9 (22%)	3/11 (27%)		1	1	2	2	1				2		5	15
*3	GRAVES Jayvon	25:59	27	3/6 (50%)	7/10 (70%)	10/16 (63%)	0/3 (0%)	1	1	2	4	1		1	1	3	5	26	6
6	PATRICK Johannes	6:33	3		1/3 (33%)	1/3 (33%)										3		1	-8
*7	BUIE Desure	24:36	10	1/1 (100%)	2/5 (40%)	3/6 (50%)	2/2 (100%)				5	1	1			1	2	12	23
*8	LEWIS Jaren	18:54	9	1/4 (25%)	1/1 (100%)	2/5 (40%)	4/4 (100%)		4	4	2		1			2	2	11	3
10	CHILDS Elijah	19:53	4	2/4 (50%)		2/4 (50%)	0/2 (0%)		2	5		1	3	4		3	1	7	-1
11	MELSON Silas	22:36	14	1/1 (100%)	4/9 (44%)	5/10 (50%)		1	4	5	5		3			1	1	16	27
*13	POLAS BAROLO Yorman	16:31	3		1/2 (50%)	1/2 (50%)		2	3	5	3	1	2			2	1	9	5
17	SANTANA MOJICA Nico	2:00	0															0	-5
*27	EDIGIN Eddy	20:07	8	3/5 (60%)	0/2 (0%)	3/7 (43%)	2/2 (100%)		4	4	1	2				2	4	11	25
Team / Coach									3		3							3	
Totals		200:00	104	15/26 (58%)	22/46 (48%)	37/72 (51%)	8/13 (62%)	12	25	37	27	8	11	5	1	25	16	130	24

OLD - EWE Baskets Oldenburg (Coach: CALLES Pedro)

No.	Name	Min	PTS	2 Points	3 Points	Field Goals	Free Throws	OR	DR	TR	AS	ST	TO	BS	SB	PF	FD	EFF	+/-
0	SCHOORMANN Len	32:21	8	0/3 (0%)	2/5 (40%)	2/8 (25%)	2/2 (100%)	1	2	3	2		1			2	1	6	-27
*4	RUSSELL DeWayne	25:56	9	3/7 (43%)	0/4 (0%)	3/11 (27%)	3/4 (75%)		3	3	8		3		1		5	8	-14
7	HEMSCHEMEIER Fritz	2:00	3		1/1 (100%)	1/1 (100%)												3	5
*9	CRANDALL Geno	23:20	14	4/6 (67%)	1/4 (25%)	5/10 (50%)	3/6 (50%)	2	1	3	1	2	4	1	1	4	5	9	-6
*15	IZUNDU Ebu ka	28:05	9	3/6 (50%)		3/6 (50%)	3/4 (75%)	3	5	8					2	4	2	13	-9
16	BROWN JR. Chau ndee	25:08	17	2/3 (67%)	1/1 (100%)	3/4 (75%)	10/10 (100%)		4	4	2		1				5	21	-33
17	AGBAKOKO Norris	11:55	7	3/3 (100%)		3/3 (100%)	1/1 (100%)	2	1	3						3	3	10	-15
20	HARMS Joel	DNP																	
*22	WANK Lukas	27:48	3		1/4 (25%)	1/4 (25%)		1	2	3	1		2					2	-28
*25	OGBE Kenneth	23:27	10	2/6 (33%)	0/3 (0%)	2/9 (22%)	6/6 (100%)		5	5	1	3	2		1	3	4	10	7
Team / Coach									1	2	3		1				2		
Totals		200:00	80	17/34 (50%)	6/22 (27%)	23/56 (41%)	28/33 (85%)	10	25	35	15	5	14	1	5	16	25	84	-24



LUD	OLD
12 / 25 / 37	10 / 25 / 35
27	15
25	16
16	25
11	14
8	5
26	30
9	12
16	10
40 (87:47)	0 (3:3)
17-0 (60:33)	13-0 (31:31)
	Lead Changes: 0
	Times Tied: 2

LEGEND

Min Minutes Played DR Defensive Rebounds AS Assists BS Blocked Shots PF Fouls +/- Plus-Minus-Rating
 DNP Did Not Play OR Offensive Rebounds ST Steals SB Shots Blocked FD Fouls Drawn * Starters
 PTS Points TR Total Rebounds TO Turnovers EFF Efficiency = ((PTS + TR + AS + ST + BS) - ((FGA - FGM) + (FTA - FTM) + TO))