



# FC Bayern München Basketball 83 : 67 MHP RIESEN Ludwigsburg



BASKETBALL

Referee: REITER Moritz  
 Umpires: BARTH Benjamin / ORUZGANI Zulfikar  
 Commissioner: WEICHERT Horst

Attendance: 6.402

München, BMW Park München (6.500 Plätze), MO 20 MAI 2024, 17:00, Game-ID: 34030

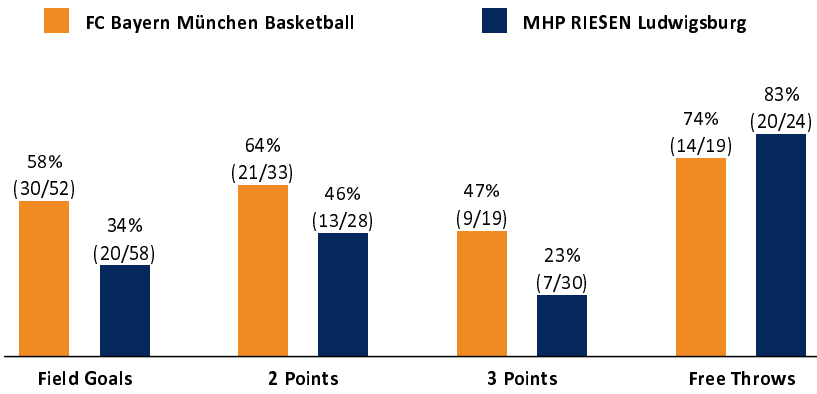
	Q1		Q2		Q3		Q4	
FCB	21	21	22	43	21	64	19	83
LUD	19	19	14	33	16	49	18	67

## FCB - FC Bayern München Basketball (Coach: LASO Pablo)

No.	Name	Min	PTS	2 Points	3 Points	Field Goals	Free Throws	OR	DR	TR	AS	ST	TO	BS	SB	PF	FD	EFF	+/-
*3	EDWARDS Carsen	30:56	21	4/6 (67%)	4/7 (57%)	8/13 (62%)	1/3 (33%)		6	6	7		2			1	3	25	24
5	WEIDEMANN Nelson	1:06	0										1					-1	-1
7	GIFFEY Niels	18:57	7	2/2 (100%)	1/2 (50%)	3/4 (75%)			2	2	2	1	1			5		10	12
9	BONGA Isaac	23:45	18	3/3 (100%)	2/2 (100%)	5/5 (100%)	6/7 (86%)	3	8	11	2	1		1		1	5	32	17
*10	BOLMARO Leandro	20:47	2	1/1 (100%)		1/1 (100%)					2	2	2			3		4	-2
*11	LUCIC Vladimir	25:02	9	2/4 (50%)	1/4 (25%)	3/8 (38%)	2/2 (100%)	1	1	2		1	2			3	3	5	7
13	OBST Andreas	24:18	4	0/2 (0%)	1/4 (25%)	1/6 (17%)	1/1 (100%)		2	2	4		1		1	1	1	4	15
*14	IBAKA Serge	24:22	15	6/9 (67%)		6/9 (67%)	3/4 (75%)	3	4	7	2		3	2		4	2	19	10
17	WIMBERG Niklas	0:38	0						1	1								1	-1
20	HARRIS Elias	10:14	2	1/1 (100%)		1/1 (100%)			3	3			2			2	1	3	10
30	KHARCHENKOV Ivan	3:32	0										1					-1	-5
*31	BOOKER Devin	16:23	5	2/5 (40%)		2/5 (40%)	1/2 (50%)	1	3	4	1	1	1			4	4	6	-6
Team / Coach									2	2			2						0
Totals		200:00	83	21/33 (64%)	9/19 (47%)	30/52 (58%)	14/19 (74%)	8	32	40	20	6	18	3	1	24	19	107	16

## LUD - MHP RIESEN Ludwigsburg (Coach: KING Josh)

No.	Name	Min	PTS	2 Points	3 Points	Field Goals	Free Throws	OR	DR	TR	AS	ST	TO	BS	SB	PF	FD	EFF	+/-
1	BÄHRE Jonathan	16:32	2		0/3 (0%)	0/3 (0%)	2/2 (100%)				2	1	1			3	1	1	-11
2	PATRICK Jacob	2:32	0													2		0	-8
3	GRAVES Jayvon	22:19	10	1/7 (14%)	2/4 (50%)	3/11 (27%)	2/4 (50%)	3	1	4	3	1				3	2	8	-8
*5	ROBERSON Jeff	22:37	6	1/3 (33%)	0/2 (0%)	1/5 (20%)	4/4 (100%)	1	1	2		1	1		1	2	3	4	-6
6	PATRICK Johannes	5:04	0		0/2 (0%)	0/2 (0%)					2	1						1	0
*7	BUIE Desure	29:56	7	2/3 (67%)	1/5 (20%)	3/8 (38%)			1	1	5	3	2			1	3	9	-15
8	LEWIS Jaren	20:32	3	1/2 (50%)	0/4 (0%)	1/6 (17%)	1/1 (100%)	1	4	5	1					3		4	-14
*11	MELSON Silas	34:25	20	3/6 (50%)	3/6 (50%)	6/12 (50%)	5/5 (100%)		2	2		1	3			1	5	14	-16
*13	POLAS BARTOLO Yorman	22:36	8	1/1 (100%)	1/3 (33%)	2/4 (50%)	3/4 (75%)		2	2	2		1			3	5	8	3
20	JORDAN Davonta	DNP																	
21	PLETA Dominykas	1:07	0															0	1
*27	EDIGIN Eddy	22:20	11	4/6 (67%)	0/1 (0%)	4/7 (57%)	3/4 (75%)	3	5	8			2	1	2	1	4	14	-6
Team / Coach									1	1						1		1	
Totals		200:00	67	13/28 (46%)	7/30 (23%)	20/58 (34%)	20/24 (83%)	8	17	25	15	8	10	1	3	20	23	64	-16



FCB	LUD
8 / 32 / 40	8 / 17 / 25
20	15
24	20
19	23
18	10
6	8
36	22
11	11
2	11
20 (61:41)	7 (2:9)
8-0 (23:19)	9-0 (64:53)
	Lead Changes: 1
	Times Tied: 1