

Referee: MATIP Martin
 Umpires: KRÜPER Moritz / PAWLIK Aleksandra
 Commissioner: HORN Markus

Attendance: 3.140
 Vechta, RASTA Dome (3.140 Plätze), SO 28 APR 2024, 15:30, Game-ID: 33450

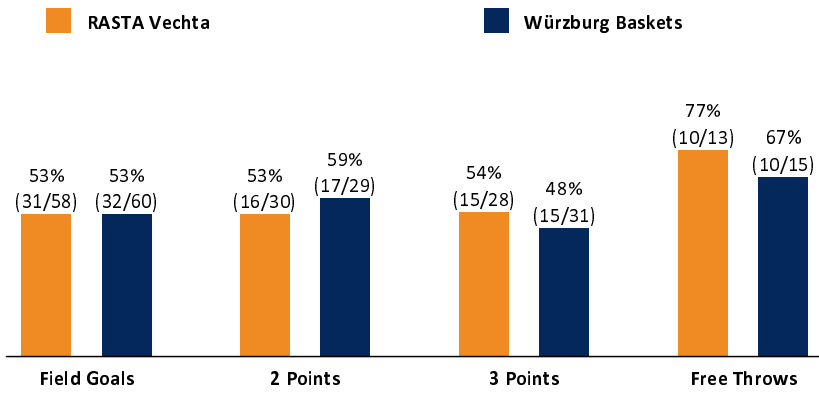
	Q1		Q2		Q3		Q4	
VEC	26	26	21	47	22	69	18	87
WUE	30	30	24	54	17	71	18	89

VEC - RASTA Vechta (Coach: HARRELSON Ty)

No.	Name	Min	PTS	2 Points	3 Points	Field Goals	Free Throws	OR	DR	TR	AS	ST	TO	BS	SB	PF	FD	EFF	+/-	
3	BAYRAM Kaya	DNP																		
6	VAN SLOOTEN Luc	DNP																		
8	DIALLO Nat	2:32	0	0/1 (0%)		0/1 (0%)							1		1				-2	-7
9	FERNER Joschka	17:56	8		2/4 (50%)	2/4 (50%)	2/2 (100%)		1	1			1			2	1	6	4	
*12	KUHSE Tommy	24:17	5	1/2 (50%)	1/3 (33%)	2/5 (40%)		1	2	3	3	1	3		1	3	2	6	-8	
15	SCHWIEGER Ryan	27:54	16	3/3 (100%)	3/6 (50%)	6/9 (67%)	1/1 (100%)	1	3	4	3		3		1	3	2	17	-1	
*17	GRÜNLOH Johann	11:40	4	0/1 (0%)	1/1 (100%)	1/2 (50%)	1/2 (50%)	1	2	3	2				1	3	1	7	12	
*22	GROVES Tanner	32:43	7	2/5 (40%)	1/3 (33%)	3/8 (38%)			7	7	3		2			2	3	10	3	
*25	IWUNDU Wes	33:32	19	3/7 (43%)	3/6 (50%)	6/13 (46%)	4/5 (80%)	1	5	6	4	1				2	4	22	-3	
*30	FLANIGAN Chip	37:05	20	3/4 (75%)	4/5 (80%)	7/9 (78%)	2/3 (67%)				4	3	1			1	3	23	4	
34	ARIRIGUZOH Richmond	12:21	8	4/7 (57%)		4/7 (57%)		3		3			1			1	1	7	-14	
Team / Coach								1	3	4								4		
Totals			200:00	87	16/30 (53%)	15/28 (54%)	31/58 (53%)	10/13 (77%)	8	23	31	19	5	12		4	17	17	100	-2

WUE - Würzburg Baskets (Coach: FILIPOVSKI Sasa)

No.	Name	Min	PTS	2 Points	3 Points	Field Goals	Free Throws	OR	DR	TR	AS	ST	TO	BS	SB	PF	FD	EFF	+/-	
*0	LIVINGSTON II Otis	31:19	23	4/6 (67%)	5/10 (50%)	9/16 (56%)		1	3	4	5		2			2	4	23	2	
*1	SELJAAS Zachary	31:25	16	4/6 (67%)	1/2 (50%)	5/8 (63%)	5/5 (100%)	1	3	4		2				3	4	19	12	
4	BÖHMER Julius	DNP																		
*5	KLASSEN Owen	29:01	13	5/7 (71%)		5/7 (71%)	3/5 (60%)	4	3	7	2		2	1		4	6	17	9	
6	UGRAI Maximilian	10:59	3		1/1 (100%)	1/1 (100%)		1	1	2			1			2		4	-7	
10	PERRY Darius	18:13	7	2/4 (50%)	1/5 (20%)	3/9 (33%)			1	1	3	3	2			1		6	-6	
*11	WASHINGTON Isaiah	35:36	13	1/2 (50%)	3/5 (60%)	4/7 (57%)	2/3 (67%)		1	1	5		3			2	1	12	5	
12	NDI Elijah	DNP																		
*20	BESS Javon	32:08	12	0/3 (0%)	4/8 (50%)	4/11 (36%)			5	5		1		3		3	1	14	6	
34	HOFFMANN Felix	2:44	0						1	1								1	-1	
40	WELP Collin	8:35	2	1/1 (100%)		1/1 (100%)	0/2 (0%)										1	0	-10	
Team / Coach								1	2	3							3			
Totals			200:00	89	17/29 (59%)	15/31 (48%)	32/60 (53%)	10/15 (67%)	8	20	28	15	6	10	4		17	17	99	2



VEC	WUE
8 / 23 / 31	8 / 20 / 28
19	15
17	17
17	17
12	10
5	6
32	28
13	10
2	
8 (18:10)	13 (56:69)
13-0 (69:69)	11-0 (39:48)
Lead Changes: 16	
Times Tied: 7	

LEGEND
 Min Minutes Played DR Defensive Rebounds AS Assists BS Blocked Shots PF Fouls +/- Plus-Minus-Rating
 DNP Did Not Play OR Offensive Rebounds ST Steals SB Shots Blocked FD Fouls Drawn * Starters
 PTS Points TR Total Rebounds TO Turnovers EFF Efficiency = ((PTS + TR + AS + ST + BS) - ((FGA - FGM) + (FTA - FTM) + TO))