



Referee: PANTHER Anne
 Umpires: GROLL Julian / FINGERLING Stefan
 Commissioner: UMLANDT Ralph

Attendance: 5.073
 Oldenburg, EWE ARENA, SO 22 APR 2018, 15:00, Game-ID: 21103

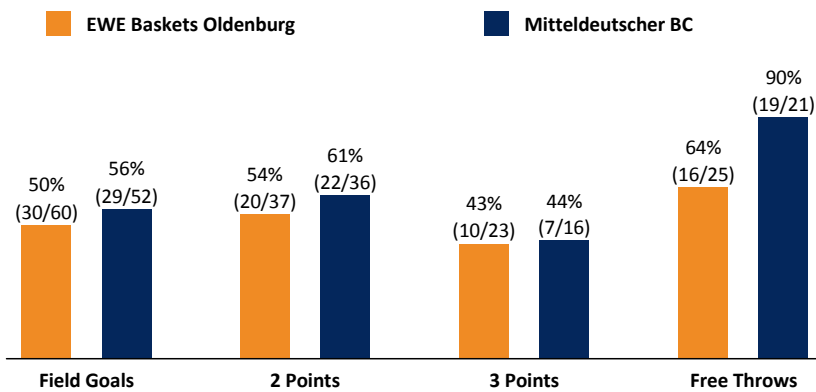
	Q1		Q2		Q3		Q4	
OLD	26	26	21	47	22	69	17	86
MBC	20	20	14	34	25	59	25	84

OLD - EWE Baskets Oldenburg (Coach: DRJENCIC Mladen)

No.	Name	Min	PTS	2 Points	3 Points	Field Goals	Free Throws	OR	DR	TR	AS	ST	TO	BS	SB	PF	FD	EFF	+/-	
2	SCOTT Durand	12:32	4	1/2 (50%)		1/2 (50%)	2/2 (100%)	1	2	3	1	2				3	1	9	1	
*4	MOORE Armani	23:01	2	0/1 (0%)	0/1 (0%)	0/2 (0%)	2/4 (50%)		2	2		1	1	1		2	5	1	-3	
5	HUJIC Haris	DNP																		
*9	TADDA Karsten	20:57	5	1/2 (50%)	1/2 (50%)	2/4 (50%)			2	2		1	1			1	2	5	6	
10	MASSENAT Frantz	25:27	10	3/9 (33%)	0/4 (0%)	3/13 (23%)	4/6 (67%)	1	1	2	4	2			1	4	4	6	-10	
13	BACAK Marko	3:13	0													2		0	1	
*23	PAULDING Rickey	31:06	13	2/3 (67%)	3/5 (60%)	5/8 (63%)		2	3	5	2					3		17	1	
*24	MAHALBASIC Rasid	27:35	25	9/13 (69%)	1/2 (50%)	10/15 (67%)	4/7 (57%)	2	5	7	2	1	3		1	3	5	24	-2	
31	PHILMORE Isaiah	9:07	9	2/3 (67%)	1/3 (33%)	3/6 (50%)	2/4 (50%)	2	1	3	1					1	2	8	3	
*32	McCONNELL Mickey	30:06	7	1/3 (33%)	1/3 (33%)	2/6 (33%)	2/2 (100%)		1	1	6		3			4	4	7	9	
33	SCHWETHELM Philipp	16:56	11	1/1 (100%)	3/3 (100%)	4/4 (100%)		1	1	2	2	1				2	1	16	4	
Team / Coach								1		1								1		
Totals			200:00	86	20/37 (54%)	10/23 (43%)	30/60 (50%)	16/25 (64%)	10	18	28	18	8	8	1	3	24	24	94	2

MBC - Mitteldeutscher BC (Coach: JOVOVIC Igor)

No.	Name	Min	PTS	2 Points	3 Points	Field Goals	Free Throws	OR	DR	TR	AS	ST	TO	BS	SB	PF	FD	EFF	+/-	
1	HATTEN Marcus	21:27	6	3/4 (75%)		3/4 (75%)			3	3	7	1	4	1		5		13	8	
*2	JONES Lamont	25:32	18	6/10 (60%)	2/5 (40%)	8/15 (53%)	0/1 (0%)						1			2	2	9	-7	
6	SCHWARZ Malte	7:03	0													1	2	0	7	
7	KERUSCH Sergio	13:17	0	0/1 (0%)		0/1 (0%)			1	1	1					1		1	1	
*12	PANTELIC Djordje	32:56	8	2/3 (67%)	0/1 (0%)	2/4 (50%)	4/4 (100%)	1	8	9	1	1	2	2		3	5	17	5	
*13	DRENOVAC Djordje	31:35	18	4/6 (67%)		4/6 (67%)	10/11 (91%)				2	1	1			2	8	17	-4	
*15	PINKINS Kruize	26:51	8	4/5 (80%)	0/3 (0%)	4/8 (50%)		1	5	6	2		2		1	4	3	10	-2	
18	GLOGER Till	5:48	2	1/2 (50%)		1/2 (50%)		1		1						2		2	-6	
*21	WARREN Andrew	34:23	24	2/5 (40%)	5/7 (71%)	7/12 (58%)	5/5 (100%)		2	2	1	1	3			4	4	20	-10	
44	TURUDIC Benedikt	1:08	0															0	-2	
Team / Coach								2	4	6							6			
Totals			200:00	84	22/36 (61%)	7/16 (44%)	29/52 (56%)	19/21 (90%)	5	23	28	14	4	13	3	1	24	24	95	-2



OLD	MBC
10 / 18 / 28	Rebounds OR/DR/TR
18	Assists
24	Fouls
24	Fouls Drawn
8	Turnovers
8	Steals
34	Points in the Paint
17	Second Chance Points
6	Fast Break Points
16 (50:34)	Biggest Lead
9-0 (9:0)	Biggest Scoring Run
	Lead Changes: 2
	Times Tied: 2

EASYCREDIT-BBL.DE

Alle offiziellen Statistiken der easyCredit BBL, Daten, Rekorde uvm. gibt es auf easyCredit-BBL.de! News, Stats, Tabelle und Spielplan für unterwegs: Kostenfrei für iOS und Android in der offiziellen Liga-App!

TELEKOMSPORT.DE

Keinen Korb mehr verpassen - Alle Spiele der easyCredit BBL LIVE und in HD! Erleben sie jetzt das größte Basketball-Angebot Deutschlands zuhause und mobil! www.telekomSport.de

LEGEND
 Min Minutes Played DR Defensive Rebounds AS Assists BS Blocked Shots PF Fouls +/- Plus-Minus-Rating
 DNP Did Not Play OR Offensive Rebounds ST Steals SB Shots Blocked FD Fouls Drawn * Starters
 PTS Points TR Total Rebounds TO Turnovers EFF Efficiency = ((PTS + TR + AS + ST + BS) - ((FGA - FGM) + (FTA - FTM) + TO))