

Referee: REITER Moritz
 Umpires: BITTNER Steve / BOHN Andreas
 Commissioner: GINTSCHEL Winfried

Attendance: 6.150
 Bamberg, BROSE ARENA, SO 11 NOV 2018, 15:00, Game-ID: 22105

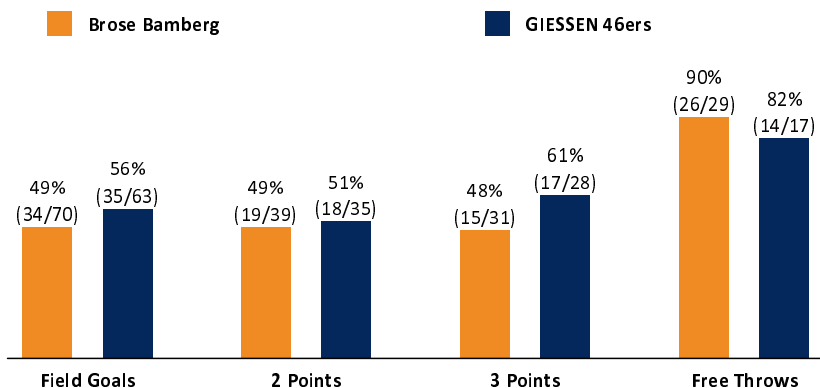
	Q1		Q2		Q3		Q4		OT1	
BAM	20	20	33	53	29	82	16	98	11	109
GIE	25	25	32	57	19	76	22	98	3	101

BAM - Brose Bamberg (Coach: BAGATSKIS Ainars)

No.	Name	Min	PTS	2 Points	3 Points	Field Goals	Free Throws	OR	DR	TR	AS	ST	TO	BS	SB	PF	FD	EFF	+/-	
4	RICE Tyrese	37:11	21	3/7 (43%)	3/6 (50%)	6/13 (46%)	6/6 (100%)	1	2	3	8		1			3	6	24	0	
*6	ZISIS Nikolaos	33:28	16	1/3 (33%)	3/5 (60%)	4/8 (50%)	5/6 (83%)	1	1	2	7		1				6	19	15	
8	JELOVAC Stevan	21:40	14	0/3 (0%)	2/7 (29%)	2/10 (20%)	8/8 (100%)	1	1	2	2				1	4	5	10	-3	
9	STUCKEY Maurice	23:09	6		2/3 (67%)	2/3 (67%)			2	2	3	1	1			2		10	-7	
12	KRATZER Leon	3:47	0	0/1 (0%)		0/1 (0%)					1							0	-4	
*13	SCHMIDT Daniel	14:48	11	1/3 (33%)	3/5 (60%)	4/8 (50%)		1		1						2		8	8	
*21	RUBIT Augustine	31:26	19	7/10 (70%)	0/1 (0%)	7/11 (64%)	5/5 (100%)	1	4	5	2	4		2		4	5	28	7	
*22	ALEXANDER Cliff	22:06	12	6/8 (75%)		6/8 (75%)	0/1 (0%)	2	3	5	2	2	1	1		3	1	16	3	
33	HECKMANN Patrick	23:40	7	1/3 (33%)	1/2 (50%)	2/5 (40%)	2/3 (67%)	2	3	5	2	1			1	2	2	11	17	
44	TAYLOR Bryce	DNP																		
*98	KULBOKA Arnoldas	13:45	3	0/1 (0%)	1/2 (50%)	1/3 (33%)			2	2	2					1		5	4	
Team / Coach								1	4	5							5			
Totals			225:00	109	19/39 (49%)	15/31 (48%)	34/70 (49%)	26/29 (90%)	10	22	32	27	8	4	3	2	21	25	136	8

GIE - GIESSEN 46ers (Coach: FREYER Ingo)

No.	Name	Min	PTS	2 Points	3 Points	Field Goals	Free Throws	OR	DR	TR	AS	ST	TO	BS	SB	PF	FD	EFF	+/-	
*3	CHAMBERS Siyani	25:48	15	2/3 (67%)	3/6 (50%)	5/9 (56%)	2/2 (100%)		2	2	5		1			3	2	17	-3	
4	KRAUSHAAR Bjarne	DNP																		
5	TAYLOR Jeri	6:12	2	1/1 (100%)	0/1 (0%)	1/2 (50%)			1	1						3		2	4	
6	AGVA Mahir	11:21	5	2/3 (67%)		2/3 (67%)	1/2 (50%)	1	2	3	1				1	2	3	7	7	
8	PJANIC Alen	DNP																		
9	MONTANA Max	11:28	11	1/2 (50%)	3/4 (75%)	4/6 (67%)			1	1			1		1	4		9	-10	
10	LANDIS Max	26:44	13	1/5 (20%)	3/5 (60%)	4/10 (40%)	2/2 (100%)	1		1	6	1	2			2	3	13	-2	
12	OKPARA Leon	DNP																		
*13	LISCHKA Benjamin	28:15	8	2/4 (50%)	1/1 (100%)	3/5 (60%)	1/1 (100%)		4	4	3		2	1		5	4	12	-9	
*23	GORDON Larry	35:44	15	2/5 (40%)	3/5 (60%)	5/10 (50%)	2/2 (100%)	1	6	7	2		1			2	3	18	-12	
*33	THOMAS Brandon	40:32	12	3/6 (50%)	1/1 (100%)	4/7 (57%)	3/4 (75%)	1	1	2	5		3		1	1	2	12	-11	
*54	BRYANT John	38:56	20	4/6 (67%)	3/5 (60%)	7/11 (64%)	3/4 (75%)	1	10	11	7	1	3	1		3	4	32	-4	
Team / Coach								1		1			1				0			
Totals			225:00	101	18/35 (51%)	17/28 (61%)	35/63 (56%)	14/17 (82%)	6	27	33	29	2	14	2	3	25	21	122	-8



BAM	Rebounds OR/DR/TR	GIE
10 / 22 / 32		6 / 27 / 33
27	Assists	29
21	Fouls	25
25	Fouls Drawn	21
4	Turnovers	14
8	Steals	2
34	Points in the Paint	34
12	Second Chance Points	9
2	Fast Break Points	14
8 (84:76)	Biggest Lead	10 (24:34)
14-0 (72:67)	Biggest Scoring Run	9-0 (20:28)
	Lead Changes: 16	
	Times Tied: 8	

EASycREDIT-BBL.DE

Alle offiziellen Statistiken der easyCredit BBL, Daten, Rekorde uvm. gibt es auf easyCredit-BBL.de! News, Stats, Tabelle und Spielplan für unterwegs: Kostenfrei für iOS und Android in der offiziellen Liga-App!

TELEKOMSPORT.DE

Keinen Korb mehr verpassen - Alle Spiele der easyCredit BBL LIVE und in HD! Erleben sie jetzt das größte Basketball-Angebot Deutschlands zuhause und mobil! www.telekom sport.de

LEGEND
 Min Minutes Played DR Defensive Rebounds AS Assists BS Blocked Shots PF Fouls +/- Plus-Minus-Rating
 DNP Did Not Play OR Offensive Rebounds ST Steals SB Shots Blocked FD Fouls Drawn * Starters
 PTS Points TR Total Rebounds TO Turnovers EFF Efficiency = ((PTS + TR + AS + ST + BS) - ((FGA - FGM) + (FTA - FTM) + TO))