



EWE Baskets Oldenburg 100 : 89

Brose Bamberg



Referee: LOTTERMOSER Robert
Umpires: KOVACEVIC Nesa / KRÜPER Moritz
Commissioner: UMLANDT Ralph

Attendance: 6.000
Oldenburg, EWE ARENA, MI 10 APR 2019, 20:30, Game-ID: 22190

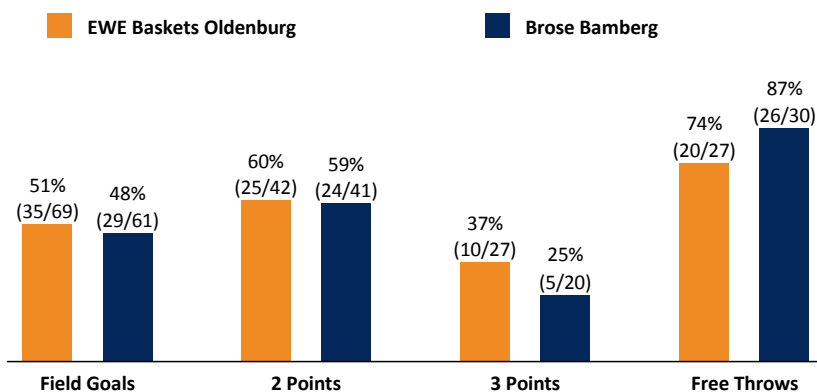
Scoreboard table showing Q1, Q2, Q3, Q4 scores for OLD and BAM.

OLD - EWE Baskets Oldenburg (Coach: DRIJENCIC Mladen)

Main player statistics table for OLD team including columns for No., Name, Min, PTS, 2 Points, 3 Points, Field Goals, Free Throws, OR, DR, TR, AS, ST, TO, BS, SB, PF, FD, EFF, +/-.

BAM - Brose Bamberg (Coach: PEREGO Federico)

Main player statistics table for BAM team including columns for No., Name, Min, PTS, 2 Points, 3 Points, Field Goals, Free Throws, OR, DR, TR, AS, ST, TO, BS, SB, PF, FD, EFF, +/-.



Summary table comparing team statistics between OLD and BAM, including Rebounds, Assists, Fouls, Turnovers, Steals, Points in the Paint, Second Chance Points, Fast Break Points, Biggest Lead, Biggest Scoring Run, Lead Changes, and Times Tied.

EASycRedit-BBL.de

Alle offiziellen Statistiken der easyCredit BBL, Daten, Rekorde uvm. gibt es auf easyCredit-BBL.de! News, Stats, Tabelle und Spielplan für unterwegs: Kostenfrei für iOS und Android in der offiziellen Liga-App!

MAGENTA SPORT

Keinen Korb mehr verpassen - Alle Spiele der easyCredit BBL und des MagentaSport BBL Pokals LIVE und in HD! Das größte Basketball-Angebot Deutschlands zuhause und mobil! www.MagentaSport.de

LEGEND: Min Minutes Played, DR Defensive Rebounds, AS Assists, BS Blocked Shots, PF Fouls, +/- Plus-Minus-Rating, DNP Did Not Play, OR Offensive Rebounds, ST Steals, SB Shots Blocked, FD Fouls Drawn, \* Starters, PTS Points, TR Total Rebounds, TO Turnovers, EFF Efficiency = ((PTS + TR + AS + ST + BS) - ((FGA - FGM) + (FTA - FTM) + TO))