



Referee: REITER Moritz
 Umpires: ORUZGANI Zulfiqar / KATTUR Radeesh
 Commissioner: SCHENCKING Albert

Attendance: 4.016
 Ludwigsburg, MHP Arena, SA 2 FEB 2019, 20:30, Game-ID: 22211

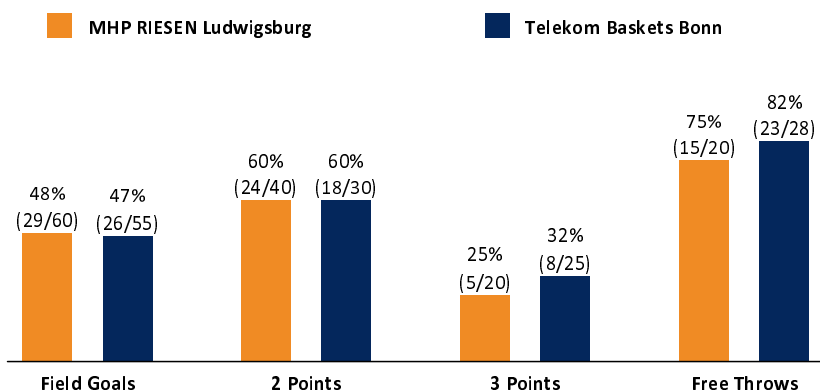
	Q1		Q2		Q3		Q4	
LUD	22	22	14	36	12	48	30	78
BON	24	24	22	46	22	68	15	83

LUD - MHP RIESEN Ludwigsburg (Coach: PATRICK John)

No.	Name	Min	PTS	2 Points	3 Points	Field Goals	Free Throws	OR	DR	TR	AS	ST	TO	BS	SB	PF	FD	EFF	+/-	
0	HUKPORTI Ariel	DNP																		
*1	CRAWFORD Jordan	35:20	10	2/3 (67%)	2/4 (50%)	4/7 (57%)		1	1	2	5	1	1			2		14	-2	
3	SABECKIS Donatas	24:30	8	4/5 (80%)	0/1 (0%)	4/6 (67%)			1	1	1		1			3	1	7	8	
4	McCRAV David	15:30	3		1/2 (50%)	1/2 (50%)										2		2	-6	
5	KLASSEN Owen	13:22	5	2/4 (50%)		2/4 (50%)	1/2 (50%)	1	1	2			2		1	3	2	2	-5	
7	KLEIN Konstantin	DNP																		
8	HERZOG Lukas	DNP																		
*11	KNIGHT Marcos	34:03	12	5/9 (56%)	0/1 (0%)	5/10 (50%)	2/3 (67%)	1	5	6	7	3	2			4	5	20	-7	
*19	WALESKOWSKI Adam	17:22	6	2/3 (67%)	0/3 (0%)	2/6 (33%)	2/4 (50%)	2	2	4		1	1			4	2	4	-18	
*20	JONES Lamont	31:06	16	5/9 (56%)	0/2 (0%)	5/11 (45%)	6/7 (86%)		3	3	1	1	4			3	5	10	-2	
27	VON FINTEL Christian	0:40	0						1	1								1	2	
*30	MARTIN Kelan	28:07	18	4/7 (57%)	2/7 (29%)	6/14 (43%)	4/4 (100%)	1	5	6	2		2			4	2	16	5	
Team / Coach								3	2	5								5		
Totals			200:00	78	24/40 (60%)	5/20 (25%)	29/60 (48%)	15/20 (75%)	9	21	30	16	6	13		1	25	17	81	-5

BON - Telekom Baskets Bonn (Coach: O'SHEA Chris)

No.	Name	Min	PTS	2 Points	3 Points	Field Goals	Free Throws	OR	DR	TR	AS	ST	TO	BS	SB	PF	FD	EFF	+/-	
4	LINHART Nate	4:07	0		0/1 (0%)	0/1 (0%)												-1	0	
5	REISCHEL Jarelle	13:18	8	4/4 (100%)	0/1 (0%)	4/5 (80%)			2	2	1		1			4	1	9	-1	
6	HANLAN Olivier	15:51	4	0/2 (0%)	0/2 (0%)	0/4 (0%)	4/4 (100%)									1	2	0	-1	
*7	SUBOTIC Bojan	23:39	11	3/4 (75%)	0/4 (0%)	3/8 (38%)	5/5 (100%)	1	4	5	1	1	4			2	5	9	6	
9	BIRCEVIC Stefan	14:38	5	2/2 (100%)	0/3 (0%)	2/5 (40%)	1/2 (50%)		3	3	1					1	2	5	-3	
*11	DILEO Anthony	31:56	15	3/3 (100%)	3/4 (75%)	6/7 (86%)		1	3	4	9	1	2			3	1	26	6	
*12	BREUNIG Martin	21:54	12	3/6 (50%)		3/6 (50%)	6/8 (75%)	1	1	2	1		2	1		3	4	9	11	
*13	POLAS BARTOLO Yorman	27:37	16	3/5 (60%)	2/3 (67%)	5/8 (63%)	4/5 (80%)	2	2	4	2	1	1				7	18	6	
*14	MAYO Josh	28:41	6		2/4 (50%)	2/4 (50%)		1	1	2	6	1	2			1		11	6	
15	WEBB III James	18:19	6	0/4 (0%)	1/3 (33%)	1/7 (14%)	3/4 (75%)	2	2	4	1		1			3	2	3	-5	
Team / Coach									5	5							5			
Totals			200:00	83	18/30 (60%)	8/25 (32%)	26/55 (47%)	23/28 (82%)	8	23	31	22	4	13	1		18	24	94	5



LUD	BON
9 / 21 / 30	8 / 23 / 31
16	Rebounds OR/DR/TR
25	Assists
17	Fouls
13	Fouls Drawn
6	Turnovers
40	Steals
8	Points in the Paint
17	Second Chance Points
2 (2:0)	Fast Break Points
8-0 (74:77)	Biggest Lead
	Biggest Scoring Run
	Lead Changes: 5
	Times Tied: 2

EASycREDIT-BBL.DE

Alle offiziellen Statistiken der easycCredit BBL, Daten, Rekorde uvm. gibt es auf easycCredit-BBL.de! News, Stats, Tabelle und Spielplan für unterwegs: Kostenfrei für iOS und Android in der offiziellen Liga-App!

MAGENTA SPORT

Keinen Korb mehr verpassen - Alle Spiele der easycCredit BBL und des MagentaSport BBL Pokals LIVE und in HD! Das größte Basketball-Angebot Deutschlands zuhause und mobil! www.MagentaSport.de

LEGEND
 Min Minutes Played DR Defensive Rebounds AS Assists BS Blocked Shots PF Fouls +/- Plus-Minus-Rating
 DNP Did Not Play OR Offensive Rebounds ST Steals SB Shots Blocked FD Fouls Drawn * Starters
 PTS Points TR Total Rebounds TO Turnovers EFF Efficiency = ((PTS + TR + AS + ST + BS) - ((FGA - FGM) + (FTA - FTM) + TO))