



HAKRO Merlins Crailsheim 85 : 94 MHP RIESEN Ludwigsburg



Referee: KOVACEVIC Nesa
 Umpires: FRÖLICH Henning / MUTAPCIC Armin
 Commissioner: DR. ESSER Norbert

Attendance: 2.134
 Crailsheim, Arena Hohenlohe, SA 27 APR 2019, 20:30, Game-ID: 22309

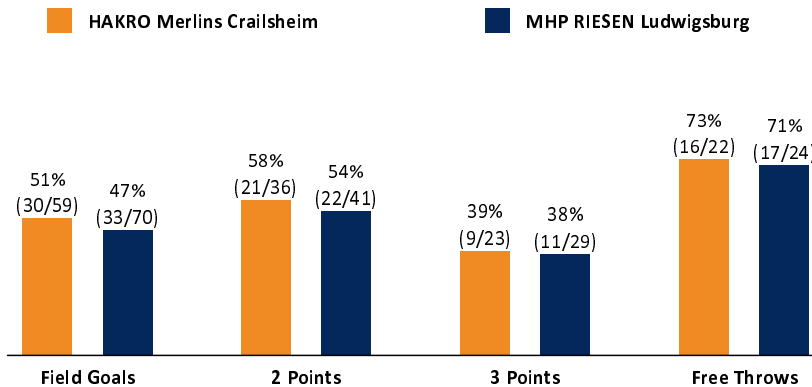
	Q1		Q2		Q3		Q4	
CRA	25	25	26	51	15	66	19	85
LUD	24	24	30	54	22	76	18	94

CRA - HAKRO Merlins Crailsheim (Coach: IISALO Tuomas)

No.	Name	Min	PTS	2 Points	3 Points	Field Goals	Free Throws	OR	DR	TR	AS	ST	TO	BS	SB	PF	FD	EFF	+/-	
0	RUSSELL DeWayne	27:35	14	2/7 (29%)	2/2 (100%)	4/9 (44%)	4/6 (67%)		2	2	8		3		1	3	6	14	-8	
*1	MADGEN Ben	33:12	18	4/5 (80%)	2/8 (25%)	6/13 (46%)	4/5 (80%)	1		1		1	2			4	6	10	9	
*4	TURNER Frank	19:29	9	4/4 (100%)		4/4 (100%)	1/1 (100%)		1	1	4	1	4				1	11	-19	
7	HERRERA Sebastian	10:07	3		1/2 (50%)	1/2 (50%)			2	2		1					1	5	-13	
*10	WYSOCKI Konrad	35:32	13	1/3 (33%)	3/5 (60%)	4/8 (50%)	2/4 (50%)	1	7	8	5	1	1	1		3	5	21	4	
14	NEUMANN Philipp	10:29	3	0/1 (0%)		0/1 (0%)	3/4 (75%)	1	3	4			1	1		2	5	5	9	
17	FERNER Joschka	DNP																		
*31	LAWSON III Joseph	14:30	4	2/4 (50%)	0/3 (0%)	2/7 (29%)		3	3	6			2		1	4		3	-12	
33	GAY Sherman	15:01	12	6/7 (86%)		6/7 (86%)		1	2	3	1		2		1	2		13	-6	
*34	THOMPSON Hollis	34:05	9	2/5 (40%)	1/3 (33%)	3/8 (38%)	2/2 (100%)	3	4	7	3	2	2			3	3	14	-9	
51	URBANSKY Sören	DNP																		
Team / Coach								1	3	4			1					3		
Totals			200:00	85	21/36 (58%)	9/23 (39%)	30/59 (51%)	16/22 (73%)	11	27	38	21	6	18	2	3	21	27	99	-9

LUD - MHP RIESEN Ludwigsburg (Coach: PATRICK John)

No.	Name	Min	PTS	2 Points	3 Points	Field Goals	Free Throws	OR	DR	TR	AS	ST	TO	BS	SB	PF	FD	EFF	+/-	
*1	CRAWFORD Jordon	28:21	20	7/9 (78%)	2/3 (67%)	9/12 (75%)			1	1	2	2	1			3	1	21	9	
2	BEST Aaron	18:37	5	1/2 (50%)	1/1 (100%)	2/3 (67%)	0/1 (0%)	1	1	2	1					3	1	6	9	
3	SABECKIS Donatas	9:53	2	1/2 (50%)		1/2 (50%)		1	1	2	2	2				2		7	6	
4	McCRAV David	0:49	0															0	-1	
*5	KLASSE Owen	18:00	3	0/3 (0%)	0/1 (0%)	0/4 (0%)	3/4 (75%)	1	5	6	2		3			4	4	3	1	
7	KLEIN Konstantin	21:58	7	1/1 (100%)	1/6 (17%)	2/7 (29%)	2/2 (100%)		2	2	2	1				2	2	7	-1	
*11	KNIGHT Marcos	34:50	27	7/12 (58%)	2/7 (29%)	9/19 (47%)	7/11 (64%)	5	4	9	2	1	3	1	1	2	7	23	10	
14	EMANGA NOUPOUE Quirin	DNP																		
*19	WALESKOWSKI Adam	22:22	8	1/3 (33%)	2/3 (67%)	3/6 (50%)			3	3	2	2	2	2		5	1	12	4	
*20	JONES Lamont	25:09	19	3/7 (43%)	3/7 (43%)	6/14 (43%)	4/5 (80%)	2	1	3						3	3	13	10	
27	VON FINTEL Christian	DNP																		
35	JALLOW Karim	20:01	3	1/2 (50%)	0/1 (0%)	1/3 (33%)	1/1 (100%)	1	1	2		1	1		1	3	1	3	-2	
Team / Coach								3	3	6							6			
Totals			200:00	94	22/41 (54%)	11/29 (38%)	33/70 (47%)	17/24 (71%)	14	22	36	13	9	10	3	2	27	20	101	9



CRA	Rebounds OR/DR/TR	LUD
11 / 27 / 38		14 / 22 / 36
21	Assists	13
21	Fouls	27
27	Fouls Drawn	20
18	Turnovers	10
6	Steals	9
36	Points in the Paint	44
13	Second Chance Points	21
6	Fast Break Points	19
9 (11:2)	Biggest Lead	13 (81:94)
9-0 (40:39)	Biggest Scoring Run	11-0 (66:76)
Lead Changes: 11		
Times Tied: 9		

EASycREDIT-BBL.DE

Alle offiziellen Statistiken der easycrredit BBL, Daten, Rekorde uvm. gibt es auf easycrredit-BBL.de! News, Stats, Tabelle und Spielplan für unterwegs: Kostenfrei für iOS und Android in der offiziellen Liga-App!

MAGENTA SPORT

Keinen Korb mehr verpassen - Alle Spiele der easycrredit BBL und des MagentaSport BBL Pokals LIVE und in HD! Das größte Basketball-Angebot Deutschlands zuhause und mobil! www.MagentaSport.de

LEGEND

Min Minutes Played DR Defensive Rebounds AS Assists BS Blocked Shots PF Fouls +/- Plus-Minus-Rating
 DNP Did Not Play OR Offensive Rebounds ST Steals SB Shots Blocked FD Fouls Drawn * Starters
 PTS Points TR Total Rebounds TO Turnovers EFF Efficiency = ((PTS + TR + AS + ST + BS) - ((FGA - FGM) + (FTA - FTM) + TO))