



EWE Baskets Oldenburg 89 : 75

Brose Bamberg



Referee: PANTHER Anne
Umpires: BARTH Benjamin / STRAUBE Carsten
Commissioner: WEICHERT Horst

Attendance: 0
MÜNCHEN, Audi Dome, SA 20 JUN 2020, 16:30, Game-ID: 25143

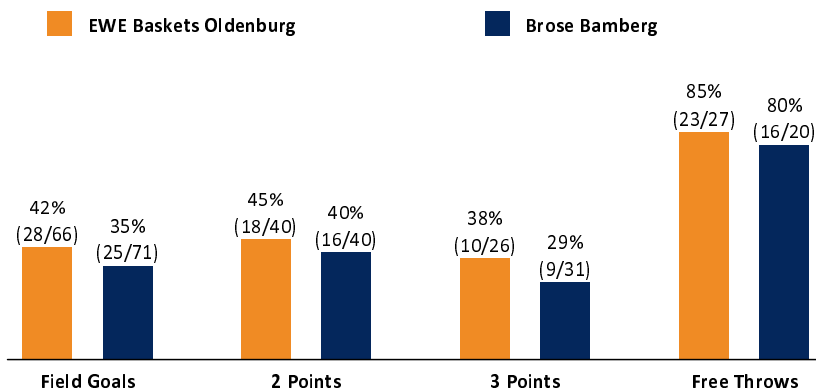
Scoreboard table showing Q1, Q2, Q3, Q4 scores for OLD and BAM.

OLD - EWE Baskets Oldenburg (Coach: DRIJENCIC Mladen)

Main player statistics table for OLD team including columns for No., Name, Min, PTS, 2 Points, 3 Points, Field Goals, Free Throws, OR, DR, TR, AS, ST, TO, BS, SB, PF, FD, EFF, +/-.

BAM - Brose Bamberg (Coach: MOORS Roel)

Main player statistics table for BAM team including columns for No., Name, Min, PTS, 2 Points, 3 Points, Field Goals, Free Throws, OR, DR, TR, AS, ST, TO, BS, SB, PF, FD, EFF, +/-.



Summary comparison table between OLD and BAM for various statistics like Rebounds, Assists, Fouls, etc.

EASYS-CREDIT-BBL.DE

Alle offiziellen Statistiken der easyCredit BBL, Daten, Rekorde uvm. gibt es auf easyCredit-BBL.de! News, Stats, Tabelle und Spielplan für unterwegs: Kostenlos für iOS und Android in der offiziellen Liga-App!

MAGENTA SPORT

Keinen Korb mehr verpassen - Alle Spiele der easyCredit BBL und des MagentaSport BBL Pokals LIVE und in HD! Das größte Basketball-Angebot Deutschlands zuhause und mobil! www.MagentaSport.de

LEGEND: Min Minutes Played, DR Defensive Rebounds, AS Assists, BS Blocked Shots, PF Fouls, +/- Plus-Minus-Rating, DNP Did Not Play, OR Offensive Rebounds, ST Steals, SB Shots Blocked, FD Fouls Drawn, * Starters, PTS Points, TR Total Rebounds, TO Turnovers, EFF Efficiency = ((PTS + TR + AS + ST + BS) - ((FGA - FGM) + (FTA - FTM) + TO))