



EWE Baskets Oldenburg 72 : 73 MHP RIESEN Ludwigsburg



Referee: CICI Gentian
 Umpires: STRAUBE Carsten / ORUZGANI Zulfikar
 Commissioner: HOLSTEN Ingo

Attendance: 6.200
 Oldenburg, EWE Arena Oldenburg (6.200 Plätze), DO 18 MAI 2023, 15:00, Game-ID: 30747

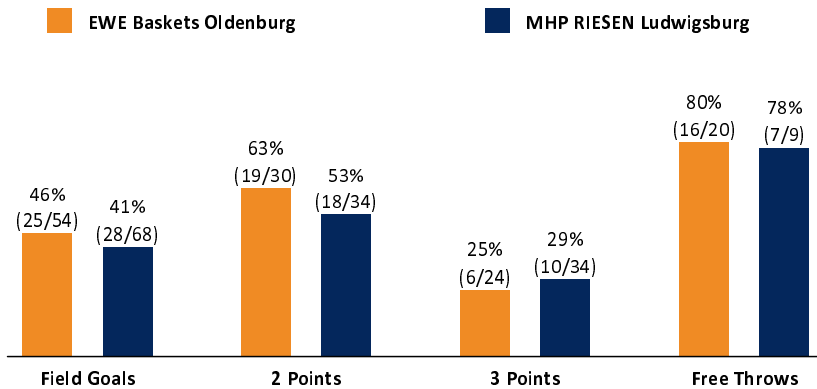
	Q1		Q2		Q3		Q4	
OLD	14	14	17	31	24	55	17	72
LUD	18	18	17	35	24	59	14	73

OLD - EWE Baskets Oldenburg (Coach: CALLES Pedro)

No.	Name	Min	PTS	2 Points	3 Points	Field Goals	Free Throws	OR	DR	TR	AS	ST	TO	BS	SB	PF	FD	EFF	+/-	
2	GRAVETT Hassani	26:18	9	3/5 (60%)	1/4 (25%)	4/9 (44%)			1	1	4	1	4			3		6	2	
*3	DILEO Maximilian	23:37	0	0/1 (0%)	0/2 (0%)	0/3 (0%)						2	2			2	2	-3	2	
*4	RUSSELL DeWayne	21:00	13	5/9 (56%)	0/6 (0%)	5/15 (33%)	3/3 (100%)		2	2	4		2			5	3	7	0	
*5	DRECHSEL Trey	34:14	12	3/6 (50%)	1/6 (17%)	4/12 (33%)	3/3 (100%)	1	6	7	2		3				3	10	0	
7	HEMSCHMEIER Fritz	DNP																		
15	KLASSEN Owen	8:47	2				2/2 (100%)						2			4	3	0	-7	
*17	AGBAKOKO Norris	29:20	9	3/3 (100%)		3/3 (100%)	3/4 (75%)	2	3	5		1	1	1		2	3	14	0	
*21	LEISSNER Tanner	17:51	5	2/2 (100%)	0/2 (0%)	2/4 (50%)	1/2 (50%)		5	5			1			1	4	6	0	
22	HOLYFIELD T.J.	24:02	15	3/4 (75%)	2/2 (100%)	5/6 (83%)	3/4 (75%)	1	4	5	1	2	1			3	3	20	5	
25	OGBE Kenneth	14:51	7		2/2 (100%)	2/2 (100%)	1/2 (50%)		2	2	1	1				2	1	10	-7	
Team / Coach								2	1	3			1					2		
Totals			200:00	72	19/30 (63%)	6/24 (25%)	25/54 (46%)	16/20 (80%)	6	24	30	12	7	17	1		22	22	72	-1

LUD - MHP RIESEN Ludwigsburg (Coach: KING Josh)

No.	Name	Min	PTS	2 Points	3 Points	Field Goals	Free Throws	OR	DR	TR	AS	ST	TO	BS	SB	PF	FD	EFF	+/-	
*1	BÄHRE Jonathan	23:05	9	3/5 (60%)	1/3 (33%)	4/8 (50%)		2	2	4								9	-2	
2	PATRICK Jacob	8:25	0		0/1 (0%)	0/1 (0%)												-1	9	
*3	HUBB Prentiss	21:22	11	1/3 (33%)	3/8 (38%)	4/11 (36%)					4		3			3	2	5	-2	
6	PATRICK Johannes	DNP																		
*7	MILLER Shonn	16:24	6	2/3 (67%)		2/3 (67%)	2/2 (100%)	2	2	4	1					5	4	10	10	
10	KUHSE Tommy	8:39	3	0/2 (0%)	1/1 (100%)	1/3 (33%)					3		2			1	2	2	4	
*12	DUNN Jhonathan	17:56	9	3/4 (75%)	1/4 (25%)	4/8 (50%)		2	1	3			1			3	1	7	-5	
*13	POLAS BARTOLO Yorman	34:02	13	3/5 (60%)	2/6 (33%)	5/11 (45%)	1/2 (50%)	1	9	10	2	1				1	6	19	-7	
21	HARTMANN Sebastian	DNP																		
27	EDIGIN Eddy	21:16	2	1/3 (33%)		1/3 (33%)		1	2	3	1		4		1	4	2	0	-8	
29	CHERRY Will	29:36	7	3/7 (43%)	0/6 (0%)	3/13 (23%)	1/2 (50%)	3	5	8	4	2	3			4	2	7	4	
93	WAARDENBURG Sam	19:15	13	2/2 (100%)	2/5 (40%)	4/7 (57%)	3/3 (100%)	1	3	4	1	1	1			3	3	15	2	
Team / Coach								2	1	3			3		1		0			
Totals			200:00	73	18/34 (53%)	10/34 (29%)	28/68 (41%)	7/9 (78%)	14	25	39	16	4	17		1	25	22	73	1



OLD	LUD
6 / 24 / 30	14 / 25 / 39
12	16
22	25
22	22
17	17
7	4
34	30
7	12
12	9
8 (46:38)	10 (23:33)
12-0 (46:38)	8-0 (6:14)
Lead Changes: 6	
Times Tied: 2	



EASYCREDIT-BBL.DE

Alle offiziellen Statistiken der easyCredit BBL, Daten, Rekorde uvm. gibt es auf easyCredit-BBL.de! Und für unterwegs: die neue offizielle Liga-App, kostenfrei für iOS und Android.



MAGENTASPORT.DE

Keinen Korb mehr verpassen - Alle Spiele der easyCredit Basketball Bundesliga und des MagentaSport BBL Pokals live auf MagentaSport.de

LEGEND	Min Minutes Played	DR Defensive Rebounds	AS Assists	BS Blocked Shots	PF Fouls	+/- Plus-Minus-Rating
DNP Did Not Play	OR Offensive Rebounds	ST Steals	SB Shots Blocked	FD Fouls Drawn	* Starters	
PTS Points	TR Total Rebounds	TO Turnovers	EFF Efficiency = ((PTS + TR + AS + ST + BS) - ((FGA - FGM) + (FTA - FTM) + TO))			