

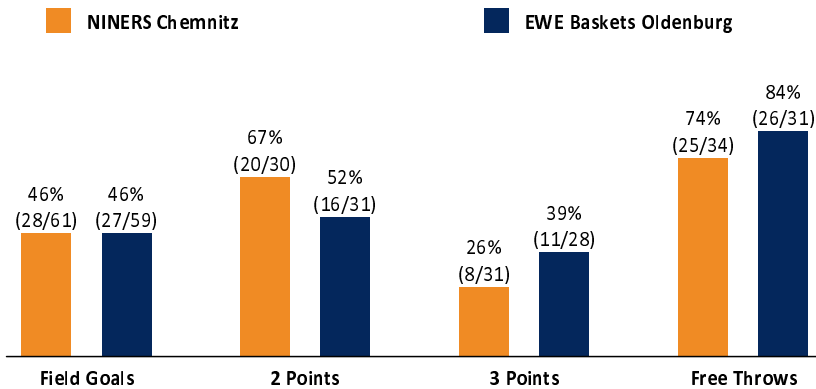
	Q1		Q2		Q3		Q4	
CHE	26	26	24	50	20	70	19	89
OLD	19	19	28	47	23	70	21	91

CHE - NINERS Chemnitz (Coach: PASTORE Rodrigo)

No.	Name	Min	PTS	2 Points	3 Points	Field Goals	Free Throws	OR	DR	TR	AS	ST	TO	BS	SB	PF	FD	EFF	+/-
0	WEIDEMANN Nelson	6:41	1	0/2 (0%)		0/2 (0%)	1/2 (50%)				1		1	1		3	1	-1	-3
*1	UGUAK Aher	27:29	5	1/2 (50%)	1/4 (25%)	2/6 (33%)		1	3	4	2		2			2	1	5	-3
*7	RICHTER Jonas	21:58	6	3/6 (50%)	0/2 (0%)	3/8 (38%)		2	2	4		2		1		3		8	5
10	OSBORNE Malik	15:12	7	3/4 (75%)		3/4 (75%)	1/2 (50%)		2	2	1	1	1	1		3	1	9	6
*13	GEORGE Jason	17:50	10	4/4 (100%)	0/3 (0%)	4/7 (57%)	2/3 (67%)	1	3	4	1	2				5	2	13	2
15	CLARK Wes	20:30	15	4/5 (80%)	2/7 (29%)	6/12 (50%)	1/1 (100%)		3	3	3	1	1			1	1	15	-4
*24	VELICKA Arnas	27:45	15	1/2 (50%)	2/6 (33%)	3/8 (38%)	7/9 (78%)	1		1	6	1	3			2	9	13	-4
29	SUSINSKAS Mindaugas	21:12	11	1/1 (100%)	1/4 (25%)	2/5 (40%)	6/6 (100%)	4		4	2	2	1			1	3	15	-1
33	LOCKHART Dominic	13:18	2	1/1 (100%)			0/2 (0%)	3		3	1	2				5	1	6	2
35	FILIPOVITY Marko	7:57	3		1/3 (33%)	1/3 (33%)			3	3	1							5	3
*53	YEBO Kevin	20:08	14	2/3 (67%)	1/2 (50%)	3/5 (60%)	7/9 (78%)	1	2	3	1					3	9	14	-13
Team / Coach								1	1	2			2			1		0	
Totals		200:00	89	20/30 (67%)	8/31 (26%)	28/61 (46%)	25/34 (74%)	14	19	33	19	11	11	3		29	28	102	-2

OLD - EWE Baskets Oldenburg (Coach: CALLES Pedro)

No.	Name	Min	PTS	2 Points	3 Points	Field Goals	Free Throws	OR	DR	TR	AS	ST	TO	BS	SB	PF	FD	EFF	+/-
2	GRAVETT Hassani	8:50	8	1/1 (100%)	2/3 (67%)	3/4 (75%)		2		2			1		1	2	1	8	-7
3	DILEO Maximilian	20:15	9		3/5 (60%)	3/5 (60%)		2	2	4		1	1		1	3		11	6
*4	RUSSELL DeWayne	33:22	27	7/11 (64%)	2/9 (22%)	9/20 (45%)	7/8 (88%)	2	1	3	10		5			2	10	23	5
*5	DRECHSEL Trey	27:32	8	1/7 (14%)	2/3 (67%)	3/10 (30%)			1	1	4	1	2			3	1	5	9
7	HEMSCHMEIER Fritz	DNP																	
*15	KLASSEN Owen	14:50	10	3/5 (60%)		3/5 (60%)	4/4 (100%)	1	6	7	1		3		1	4	3	13	9
17	AGBAKOKO Norris	15:02	9	1/3 (33%)		1/3 (33%)	7/8 (88%)	1		1						3	5	7	-3
*21	LEISSNER Tanner	15:52	2		0/3 (0%)	0/3 (0%)	2/2 (100%)	1	1	2	1					3	2	2	-6
22	HOLYFIELD T.J.	15:07	6		1/1 (100%)	1/1 (100%)	3/4 (75%)		1	1			1			5	2	5	3
25	OGBE Kenneth	26:48	10	2/3 (67%)	1/3 (33%)	3/6 (50%)	3/5 (60%)	5	1	6						2	4	11	-2
*35	PIANIC Alen	22:22	2	1/1 (100%)	0/1 (0%)	1/2 (50%)			3	3	2		1			1		5	-4
Team / Coach								1	2	3			1				2		
Totals		200:00	91	16/31 (52%)	11/28 (39%)	27/59 (46%)	26/31 (84%)	15	18	33	18	2	15		3	28	28	92	2



CHE	OLD
14 / 19 / 33	15 / 18 / 33
Rebounds	OR/DR/TR
19	Assists
29	Fouls
28	Fouls Drawn
11	Turnovers
11	Steals
34	Points in the Paint
17	Second Chance Points
6	Fast Break Points
9 (30:21)	Biggest Lead
6-0 (20:13)	Biggest Scoring Run
Lead Changes: 4	
Times Tied: 6	



EASYCREDIT-BBL.DE

Alle offiziellen Statistiken der easyCredit BBL, Daten, Rekorde uvm. gibt es auf easyCredit-BBL.de! Und für unterwegs: die neue offizielle Liga-App, kostenfrei für iOS und Android.



MAGENTASPORT.DE

Keinen Korb mehr verpassen - Alle Spiele der easyCredit Basketball Bundesliga und des MagentaSport BBL Pokals live auf MagentaSport.de

LEGEND
 Min Minutes Played DR Defensive Rebounds AS Assists BS Blocked Shots PF Fouls +/- Plus-Minus-Rating
 DNP Did Not Play OR Offensive Rebounds ST Steals SB Shots Blocked FD Fouls Drawn * Starters
 PTS Points TR Total Rebounds TO Turnovers EFF Efficiency = ((PTS + TR + AS + ST + BS) - ((FGA - FGM) + (FTA - FTM) + TO))