



HAKRO Merlins Crailsheim 63 : 99 EWE Baskets Oldenburg



Referee: LOTTERMOSER Robert
 Umpires: REITER Moritz / FRISCHMUTH Sven
 Commissioner: BENDER Ute

Attendance: 2.411
 lshofen, Arena Hohenlohe (3.000 Plätze), SA 4 NOV 2023, 20:00, Game-ID: 33230

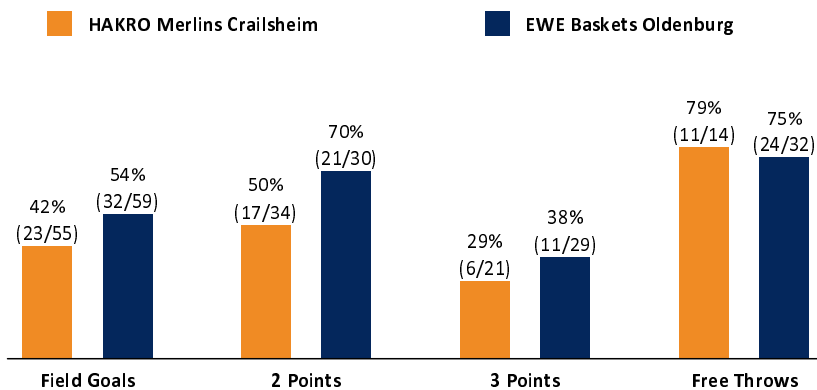
	Q1		Q2		Q3		Q4	
CRA	14	14	20	34	15	49	14	63
OLD	15	15	25	40	33	73	26	99

CRA - HAKRO Merlins Crailsheim (Coach: MARKOVIC Nikola)

No.	Name	Min	PTS	2 Points	3 Points	Field Goals	Free Throws	OR	DR	TR	AS	ST	TO	BS	SB	PF	FD	EFF	+/-	
*1	COOK Keandre	29:20	16	2/6 (33%)	1/3 (33%)	3/9 (33%)	9/10 (90%)	2	3	5	2	2	3		1	4	8	15	-33	
*2	CHILDRESS Brandon	13:20	2	0/1 (0%)	0/1 (0%)	0/2 (0%)	2/4 (50%)		2	2		1	2			1	5	-1	-18	
3	STUCKEY Maurice	24:36	9	3/4 (75%)	1/6 (17%)	4/10 (40%)			3	3		1	2			3		5	-15	
4	BAGGETTE Elias	17:21	9	3/3 (100%)	1/2 (50%)	4/5 (80%)			2	2	1	1	3			3	1	9	-28	
6	WULFF Luis	5:13	0									1				2		1	-1	
*8	ODURO Prince	25:07	2	1/5 (20%)		1/5 (20%)		3	3	6			3	3	2	4	2	4	-18	
9	BLECK Fabian	17:27	4	2/3 (67%)		2/3 (67%)					2	1	1			3		5	-19	
11	KINDZEKA Rene	7:09	0		0/3 (0%)				1	1	1					1		-1	-5	
*12	MURRAY-BOYLES James	27:16	12	3/8 (38%)	2/3 (67%)	5/11 (45%)		1		1	5	1	3					10	-24	
*19	WESTERMANN Leo	23:01	7	2/3 (67%)	1/3 (33%)	3/6 (50%)			2	2	3	1	4			5	3	6	-8	
30	SMITH Galin	10:10	2	1/1 (100%)		1/1 (100%)										1	1	2	-11	
Team / Coach								1	1	2			1				1			
Totals			200:00	63	17/34 (50%)	6/21 (29%)	23/55 (42%)	11/14 (79%)	7	17	24	14	9	22	3	3	27	20	56	-36

OLD - EWE Baskets Oldenburg (Coach: CALLES Pedro)

No.	Name	Min	PTS	2 Points	3 Points	Field Goals	Free Throws	OR	DR	TR	AS	ST	TO	BS	SB	PF	FD	EFF	+/-	
*0	SCHOORMANN Len	19:54	0		0/5 (0%)	0/5 (0%)			3	3	1	4	1			4		2	20	
*3	DILEO Maximilian	30:51	12	2/3 (67%)	2/5 (40%)	4/8 (50%)	2/2 (100%)	1	3	4	1	3				2	4	16	33	
*4	RUSSELL DeWayne	32:27	26	6/8 (75%)	3/6 (50%)	9/14 (64%)	5/5 (100%)	2	2	4	11	1	3		1	2	3	34	40	
11	FOSTER Kyle	3:46	0	0/1 (0%)		0/1 (0%)									1			-1	-8	
*15	IZUNDU Ebuka	17:29	6	3/3 (100%)		3/3 (100%)	0/2 (0%)	1	4	5			1	2		2	3	10	18	
17	AGBAKOKO Norris	22:31	16	3/5 (60%)		3/5 (60%)	10/15 (67%)	5	3	8		1	3	1		3	10	16	18	
21	MANNING JR. Charles	23:05	13	4/7 (57%)	1/2 (50%)	5/9 (56%)	2/2 (100%)		2	2	2	1	2		1		2	12	15	
22	WANK Lukas	19:26	11	1/1 (100%)	3/5 (60%)	4/6 (67%)					1		1					9	12	
*24	WILLIAMS Deane	20:12	12	2/2 (100%)	2/5 (40%)	4/7 (57%)	2/2 (100%)		4	4	3	2	2			4	2	16	28	
25	OGBE Kenneth	10:19	3		0/1 (0%)	0/1 (0%)	3/4 (75%)		3	3		1	1			4	3	4	4	
Team / Coach								3	1	4							4			
Totals			200:00	99	21/30 (70%)	11/29 (38%)	32/59 (54%)	24/32 (75%)	12	25	37	19	13	14	3	3	21	27	122	36



CRA	OLD
7 / 17 / 24	12 / 25 / 37
14	19
27	21
20	27
22	14
9	13
30	38
4	12
6	15
3 (9:6)	37 (61:98)
8-0 (22:26)	13-0 (14:26)
Lead Changes: 4	
Times Tied: 5	

LEGEND
 Min Minutes Played DR Defensive Rebounds AS Assists BS Blocked Shots PF Fouls +/- Plus-Minus-Rating
 DNP Did Not Play OR Offensive Rebounds ST Steals SB Shots Blocked FD Fouls Drawn * Starters
 PTS Points TR Total Rebounds TO Turnovers EFF Efficiency = ((PTS + TR + AS + ST + BS) - ((FGA - FGM) + (FTA - FTM) + TO))