



FC Bayern München Basketball 99 : 75

Würzburg Baskets



BASKETBALL

Referee: REITER Markus (D)
Umpires: MADINGER Christof / SIROWI Dennis (D)
Commissioner: WEICHERT Horst (D)

Attendance: 6.500

München, BMW Park München (6.500 Plätze), FR 31 MAI 2024, 20:30, Game-ID: 34050

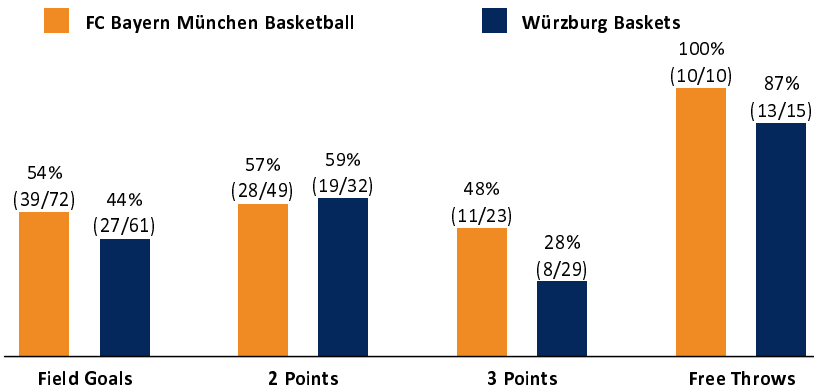
	Q1		Q2		Q3		Q4	
FCB	22	22	26	48	25	73	26	99
WUE	21	21	23	44	16	60	15	75

FCB - FC Bayern München Basketball (Coach: LASO Pablo)

No.	Name	Min	PTS	2 Points	3 Points	Field Goals	Free Throws	OR	DR	TR	AS	ST	TO	BS	SB	PF	FD	EFF	+/-	
*3	EDWARDS Carsten	28:05	14	4/7 (57%)	2/4 (50%)	6/11 (55%)					1	2	1			1	1	11	12	
5	WEIDEMANN Nelson	2:56	2	1/2 (50%)	0/1 (0%)	1/3 (33%)					1							1	-1	
7	GIFFEY Niels	20:51	8	1/2 (50%)	1/4 (25%)	2/6 (33%)	3/3 (100%)	1	1	2		2				4	3	8	20	
9	BONGA Isaac	18:56	14	4/6 (67%)	2/3 (67%)	6/9 (67%)		2	4	6	3		1			1	3	19	10	
*10	BOLMARO Leandro	16:18	9	2/2 (100%)	1/1 (100%)	3/3 (100%)	2/2 (100%)		5	5	2		1			3	1	15	15	
*11	LUCIC Vladimir	26:03	14	2/6 (33%)	3/3 (100%)	5/9 (56%)	1/1 (100%)		2	2	2						2	14	21	
13	OBST Andreas	23:15	3		1/4 (25%)	1/4 (25%)			1	1	6					3	2	7	18	
*14	IBAKA Serge	20:13	10	4/7 (57%)	0/1 (0%)	4/8 (50%)	2/2 (100%)	6	3	9	3		1	1		2	3	18	5	
17	WIMBERG Niklas	3:31	2	1/1 (100%)		1/1 (100%)										1		2	-1	
20	HARRIS Elias	13:04	10	4/7 (57%)		4/7 (57%)	2/2 (100%)	3	2	5	2	1	1		1		1	14	11	
30	KHARCHENKOV Ivan	7:35	2	1/1 (100%)	0/1 (0%)	1/2 (50%)		1	1	2	1					2		4	-1	
*31	BOOKER Devin	19:13	11	4/8 (50%)	1/1 (100%)	5/9 (56%)			1	1	4					3		12	11	
Team / Coach								2	1	3								3		
Totals			200:00	99	28/49 (57%)	11/23 (48%)	39/72 (54%)	10/10 (100%)	15	21	36	25	5	5	1	1	20	16	128	24

WUE - Würzburg Baskets (Coach: FILIPOVSKI Sasa)

No.	Name	Min	PTS	2 Points	3 Points	Field Goals	Free Throws	OR	DR	TR	AS	ST	TO	BS	SB	PF	FD	EFF	+/-	
*1	SELJAAS Zachary	30:08	17	3/5 (60%)	2/3 (67%)	5/8 (63%)	5/5 (100%)	2	4	6		1				1	5	21	-17	
*5	KLASSEN Owen	20:36	12	6/6 (100%)		6/6 (100%)		2	1	3			3			4	1	12	-16	
6	UGRAI Maximilian	19:24	10	3/3 (100%)	1/3 (33%)	4/6 (67%)	1/1 (100%)	1	1	2		1	1			2	1	10	-8	
8	BROWN Jaden	DNP																		
*10	PERRY Darius	34:11	14	2/3 (67%)	3/7 (43%)	5/10 (50%)	1/2 (50%)	1	1	2	8		5		1	3	5	13	-26	
11	WASHINGTON Isaiah	25:37	4	1/5 (20%)	0/5 (0%)	1/10 (10%)	2/2 (100%)	2	2	4	2	1	1			1	3	1	-12	
12	NDI Elijah	6:03	0	0/2 (0%)		0/2 (0%)		1	1	2								0	-4	
*20	BESS Javon	24:03	10	3/4 (75%)	1/3 (33%)	4/7 (57%)	1/1 (100%)		1	1	2	1		1		2	3	12	-22	
34	HOFFMANN Felix	14:16	5	1/1 (100%)	1/2 (50%)	2/3 (67%)		1		1						3		5	-5	
*40	WELP Collin	25:42	3	0/3 (0%)	0/6 (0%)	0/9 (0%)	3/4 (75%)	2	3	5							2	-2	-10	
Team / Coach									3	3			1				2			
Totals			200:00	75	19/32 (59%)	8/29 (28%)	27/61 (44%)	13/15 (87%)	12	17	29	12	4	11	1	1	16	20	74	-24



FCB	Rebounds OR/DR/TR	WUE
15 / 21 / 36		12 / 17 / 29
25	Assists	12
20	Fouls	16
16	Fouls Drawn	20
5	Turnovers	11
5	Steals	4
48	Points in the Paint	36
19	Second Chance Points	13
4	Fast Break Points	4
25 (90:65)	Biggest Lead	0 (:)
10-0 (90:65)	Biggest Scoring Run	6-0 (92:73)
	Lead Changes:	0
	Times Tied:	0

LEGEND

Min Minutes Played DR Defensive Rebounds AS Assists BS Blocked Shots PF Fouls +/- Plus-Minus-Rating
DNP Did Not Play OR Offensive Rebounds ST Steals SB Shots Blocked FD Fouls Drawn * Starters
PTS Points TR Total Rebounds TO Turnovers EFF Efficiency = ((PTS + TR + AS + ST + BS) - ((FGA - FGM) + (FTA - FTM) + TO))